

**Getting Started with Your
EISA-GPIB and the NI-488.2M™ Software for
HP 9000 Series 700**

July 1994 Edition

Part Number 320806A-01

**© Copyright 1994 National Instruments Corporation.
All Rights Reserved.**

National Instruments Corporate Headquarters

6504 Bridge Point Parkway

Austin, TX 78730-5039

(512) 794-0100

Technical support fax: (800) 328-2203

(512) 794-5678

Branch Offices:

Australia (03) 879 9422, Austria (0662) 435986, Belgium 02/757.00.20,

Canada (Ontario) (519) 622-9310, Canada (Québec) (514) 694-8521,

Denmark 45 76 26 00, Finland (90) 527 2321, France (1) 48 14 24 24,

Germany 089/741 31 30, Italy 02/48301892, Japan (03) 3788-1921,

Netherlands 03480-33466, Norway 32-848400, Spain (91) 640 0085,

Sweden 08-730 49 70, Switzerland 056/20 51 51, U.K. 0635 523545

Limited Warranty

The EISA-GPIB is warranted against defects in materials and workmanship for a period of two years from the date of shipment, as evidenced by receipts or other documentation. National Instruments will, at its option, repair or replace equipment that proves to be defective during the warranty period. This warranty includes parts and labor.

The media on which you receive National Instruments software are warranted not to fail to execute programming instructions, due to defects in materials and workmanship, for a period of 90 days from date of shipment, as evidenced by receipts or other documentation. National Instruments will, at its option, repair or replace software media that do not execute programming instructions if National Instruments receives notice of such defects during the warranty period. National Instruments does not warrant that the operation of the software shall be uninterrupted or error free.

A Return Material Authorization (RMA) number must be obtained from the factory and clearly marked on the outside of the package before any equipment will be accepted for warranty work. National Instruments will pay the shipping costs of returning to the owner parts which are covered by warranty.

National Instruments believes that the information in this manual is accurate. The document has been carefully reviewed for technical accuracy. In the event that technical or typographical errors exist, National Instruments reserves the right to make changes to subsequent editions of this document without prior notice to holders of this edition. The reader should consult National Instruments if errors are suspected. In no event shall National Instruments be liable for any damages arising out of or related to this document or the information contained in it.

EXCEPT AS SPECIFIED HEREIN, NATIONAL INSTRUMENTS MAKES NO WARRANTIES, EXPRESS OR IMPLIED, AND SPECIFICALLY DISCLAIMS ANY WARRANTY OF MERCHANTABILITY OR FITNESS FOR A PARTICULAR PURPOSE. CUSTOMER'S RIGHT TO RECOVER DAMAGES CAUSED BY FAULT OR NEGLIGENCE ON THE PART OF NATIONAL INSTRUMENTS SHALL BE LIMITED TO THE AMOUNT THEREFORE PAID BY THE CUSTOMER. NATIONAL INSTRUMENTS WILL NOT BE LIABLE FOR DAMAGES RESULTING FROM LOSS OF DATA, PROFITS, USE OF PRODUCTS, OR INCIDENTAL OR CONSEQUENTIAL DAMAGES, EVEN IF ADVISED OF THE POSSIBILITY THEREOF. This limitation of the liability of National Instruments will apply regardless of the form of action, whether in contract or tort, including negligence. Any action against National Instruments must be brought within one year after the cause of action accrues. National Instruments shall not be liable for any delay in performance due to causes beyond its reasonable control. The warranty provided herein does not cover damages, defects, malfunctions, or service failures caused by owner's failure to follow the National Instruments installation, operation, or maintenance instructions; owner's modification of the product; owner's abuse, misuse, or negligent acts; and power failure or surges, fire, flood, accident, actions of third parties, or other events outside reasonable control.

Copyright

Under the copyright laws, this publication may not be reproduced or transmitted in any form, electronic or mechanical, including photocopying, recording, storing in an information retrieval system, or translating, in whole or in part, without the prior written consent of National Instruments Corporation.

Trademarks

NAT4882[®], NI-488[®], Turbo488[®], NI-488.2[™], NI-488.2M[™], and TNT4882C[™] are trademarks of National Instruments Corporation.

Product and company names listed are trademarks or trade names of their respective companies.

Warning Regarding Medical and Clinical Use of National Instruments Products

National Instruments products are not designed with components and testing intended to ensure a level of reliability suitable for use in treatment and diagnosis of humans. Applications of National Instruments products involving medical or clinical treatment can create a potential for accidental injury caused by product failure, or by errors on the part of the user or application designer. Any use or application of National Instruments products for or involving medical or clinical treatment must be performed by properly trained and qualified medical personnel, and all traditional medical safeguards, equipment, and procedures that are appropriate in the particular situation to prevent serious injury or death should always continue to be used when National Instruments products are being used. National Instruments products are NOT intended to be a substitute for any form of established process, procedure, or equipment used to monitor or safeguard human health and safety in medical or clinical treatment.

FCC/DOC Radio Frequency Interference Compliance

This equipment generates and uses radio frequency energy and, if not installed and used in strict accordance with the instructions in this manual, may cause interference to radio and television reception. This equipment has been tested and found to comply with the following two regulatory agencies:

Federal Communications Commission

This device complies with Part 15 of the Federal Communications Commission (FCC) Rules for a Class B digital device. A Class B device is distinguishable from a Class A device by the appearance of an FCC ID number located on the Class B device.

Canadian Department of Communications

This device complies with the limits for radio noise emissions from digital apparatus set out in the Radio Interference Regulations of the Canadian Department of Communications (DOC).

Le présent appareil numérique n'émet pas de bruits radioélectriques dépassant les limites applicables aux appareils numériques de classe B prescrites dans le règlement sur le brouillage radioélectrique édicté par le ministère des communications du Canada.

Instructions to Users

These regulations are designed to provide reasonable protection against interference from the equipment to radio and television reception in residential areas.

There is no guarantee that interference will not occur in a particular installation. However, the chances of interference are much less if the equipment is installed and used according to this instruction manual.

If the equipment does cause interference to radio or television reception, which can be determined by turning the equipment on and off, one or more of the following suggestions may reduce or eliminate the problem.

- Operate the equipment and the receiver on different branches of your AC electrical system.
- Move the equipment away from the receiver with which it is interfering.
- Reorient or relocate the receiver's antenna.
- Be sure that the equipment is plugged into a grounded outlet and that the grounding has not been defeated with a cheater plug.

Notice to user: Changes or modifications not expressly approved by National Instruments could void the user's authority to operate the equipment under the FCC Rules.

If necessary, consult National Instruments or an experienced radio/television technician for additional suggestions. The following booklet prepared by the FCC may also be helpful: *How to Identify and Resolve Radio-TV Interference Problems*. This booklet is available from the U.S. Government Printing Office, Washington, DC 20402, Stock Number 004-000-00345-4.

Contents

About This Manual	ix
Organization of This Manual	ix
Conventions Used in This Manual.....	x
Related Documentation	x
Customer Communication	xi
Chapter 1	
Introduction	1-1
How to Use This Manual	1-1
What You Need to Get Started	1-2
Hardware Description	1-2
Software Description	1-2
Chapter 2	
Hardware Configuration and Installation	2-1
Load the Distribution Disk.....	2-1
Install the Hardware	2-1
Configure the Hardware (Optional).....	2-3
Selecting the Interrupt Request Line	2-3
Selecting the DMA Channel	2-3
Remove the Board (Optional).....	2-4
Chapter 3	
Software Installation and Configuration	3-1
Software Components	3-1
Install the NI-488.2M Software	3-2
Automatic Installation	3-2
Manual Installation	3-2
Configure the Software with ibconf.....	3-4
Remove the NI-488.2M Driver (Optional)	3-6
Chapter 4	
Installation Verification and Troubleshooting	4-1
Run the Software Installation Test.....	4-1
Troubleshooting Error Messages	4-1
Common Questions	4-2
Chapter 5	
Using Your NI-488.2M Software	5-1
Introduction to ibic.....	5-1
Programming Considerations.....	5-1

Contents

Appendix A
Hardware Specifications A-1

Appendix B
Customer Communication B-1

Glossary Glossary-1

Tables

Table A-1. Electrical Characteristics A-1
Table A-2. Physical Characteristics A-1
Table A-3. Environmental Characteristics A-1

About This Manual

This manual contains instructions to help you install and configure the National Instruments EISA-GPIB interface board and the NI-488.2 multitasking software (NI-488.2M) driver for the HP-UX operating system, version 9.01 and higher. The hardware and software are intended for use on an HP 9000 Series 700 workstation. This manual is meant to be used with the *NI-488.2M Software Reference Manual*.

This manual assumes that you are already familiar with the HP 9000 Series 700 workstation and the HP-UX operating system.

Organization of This Manual

This manual is organized as follows:

- Chapter 1, *Introduction*, explains how to use this manual, lists what you need to get started, and briefly describes the EISA-GPIB hardware and the NI-488.2M software.
- Chapter 2, *Hardware Configuration and Installation*, contains instructions to help you configure and install your EISA-GPIB board in an HP 9000 Series 700 workstation that has at least one EISA slot.
- Chapter 3, *Software Installation and Configuration*, contains instructions to help you install and configure your NI-488.2M software in the HP-UX kernel.
- Chapter 4, *Installation Verification and Troubleshooting*, describes how to verify the software installation and how to troubleshoot problems.
- Chapter 5, *Using Your NI-488.2M Software*, describes the `ibic` utility and lists some programming considerations.
- Appendix A, *Hardware Specifications*, describes the physical characteristics of the EISA-GPIB board and the recommended operating conditions.
- Appendix B, *Customer Communication*, contains forms you can use to request help from National Instruments or to comment on our products and manuals.
- The *Glossary* contains an alphabetical list and a description of the terms, including abbreviations, acronyms, metric prefixes, mnemonics, and symbols, that this manual uses.

Conventions Used in This Manual

This manual uses the following conventions.

<i>italic</i>	Italic text denotes emphasis, a cross reference, or an introduction to a key concept.
<i>bold italic</i>	Bold italic text denotes a note, caution, or warning.
monospace	Text in this font denotes text or characters that you literally input from the keyboard. This font also denotes sections of code, programming examples, syntax examples, the proper names of disk drives, paths, directories, programs, subprograms, subroutines, device names, functions, variables, filenames, extensions, and statements and comments taken from program code.
bold monospace	Bold text in this font denotes the messages and responses that the computer automatically prints to the screen.
<i>italic monospace</i>	Italic lowercase text in this font denotes that you must supply the appropriate words or values in the place of these items.
NI-488.2M	NI-488.2M refers to the NI-488.2M software for HP-UX.
HP-UX	HP-UX refers to the HP-UX operating system on an HP 9000 Series 700 computer.

The *Glossary* lists abbreviations, acronyms, metric prefixes, mnemonics, symbols, and terms.

Related Documentation

The following documents contain information that you may find helpful as you read this manual.

- *NI-488.2M Software Reference Manual*
- ANSI/IEEE Standard 488.1-1987, *IEEE Standard Digital Interface for Programmable Instrumentation*
- ANSI/IEEE Standard 488.2-1987, *IEEE Standard Codes, Formats, Protocols, and Common Commands*
- *EISA Configuration Guide for HP-UX, HP 9000 Series 700 Computers* (HP part number B2355-90012)

- *HP-UX Driver Development Guide, HP 9000 Series 300/400/700* (HP part number 98577-90013)

Customer Communication

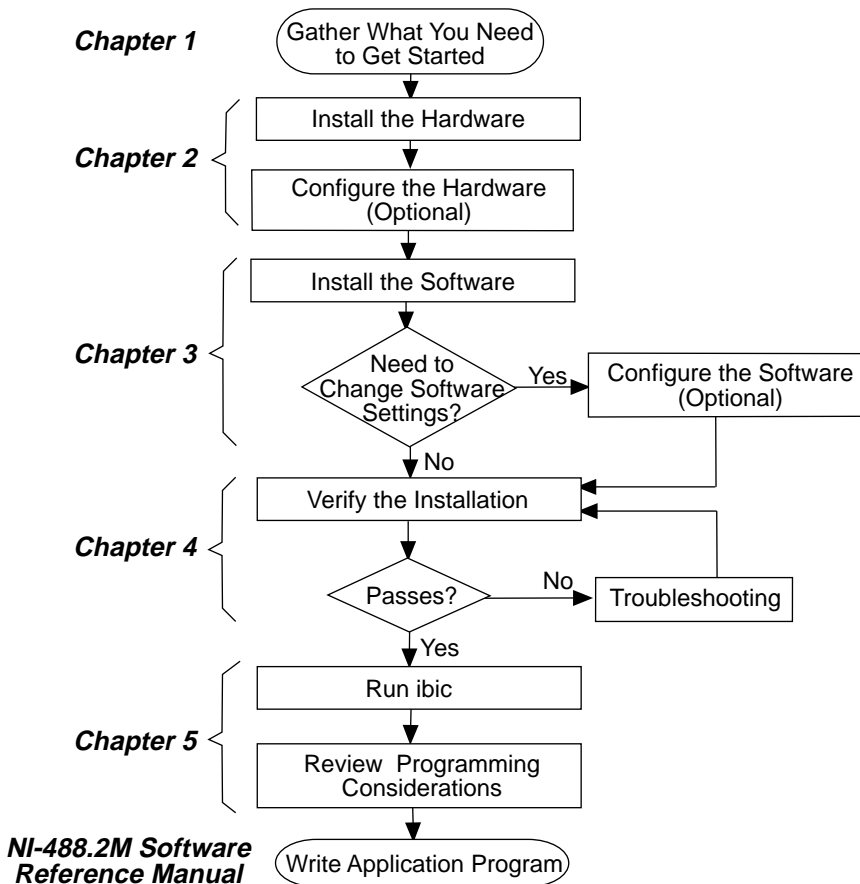
National Instruments wants to receive your comments on our products and manuals. We are interested in the applications you develop with our products, and we want to help if you have problems with them. To make it easy for you to contact us, this manual contains comment and configuration forms for you to complete. These forms are in Appendix B, *Customer Communication*, at the end of this manual.

Chapter 1

Introduction

This chapter explains how to use this manual, lists what you need to get started, and briefly describes the EISA-GPIB hardware and the NI-488.2M software.

How to Use This Manual



What You Need to Get Started

- EISA-GPIB board
- 3.5 in. *NI-488.2M Distribution Disk for the EISA-GPIB/AT-GPIB and HP-UX 9.x*
- HP-UX operating system version 9.01 or higher installed on your computer
- Super-user privilege

Hardware Description

The EISA-GPIB board, equipped with a TNT4882C ASIC, transforms any HP 9000 Series 700 workstation equipped with an EISA bus into a full-functioning GPIB Talker/Listener/Controller. The TNT4882C chip combines the circuitry of the NAT4882 ASIC, the Turbo488 performance-enhancing ASIC, and GPIB transceivers to create a single-chip IEEE 488.2 Talker/Listener/Controller interface. The TNT4882C also implements the HS488 high-speed protocol, which increases the maximum data transfer rate of the EISA-GPIB up to 5.6 Mbytes/s.

You can use standard GPIB cables to connect the EISA-GPIB with up to 14 instruments. If you want to use more than the maximum number of instruments, you can order a bus extender or expander from National Instruments. Refer to Appendix A, *Hardware Specifications*, for more information about the EISA-GPIB hardware specifications and recommended operating conditions.

Software Description

The NI-488.2M software and GPIB hardware transform any HP 9000 Series 700 workstation with at least one EISA slot, and running HP-UX release 9.01 (or higher), into a GPIB Talker/Listener/Controller with complete communications and bus management capabilities. The NI-488.2M software includes a driver; an interactive control program; several utility programs for installing, configuring, and testing the driver; and a C language interface for use with user-developed applications.

Chapter 2

Hardware Configuration and Installation

This chapter contains instructions to help you configure and install your EISA-GPIB board into an HP 9000 Series 700 workstation that has at least one EISA slot.

Warning: *Several components on your EISA-GPIB board can be damaged by electrostatic discharge. To avoid such damage when you handle the board, touch the antistatic plastic package to a metal part of your computer chassis before you remove the board from the package.*

Before you install the GPIB board, consider the following:

- You must have super-user privilege.
- You must load the contents of the NI-488.2M distribution disk onto the hard drive of your HP workstation. The distribution disk is in `tar` format.

Load the Distribution Disk

1. Log on as super-user (`root`).
2. Create a working directory (for example, `/usr/gpib`) and change to that directory by entering the following commands:

```
mkdir /usr/gpib
cd /usr/gpib
```

3. Insert the NI-488.2M distribution disk and copy the files from the distribution disk to this directory using the `tar` command:

```
tar xvf <floppy device>
```

where `<floppy device>` is the pathname of your floppy disk drive, as represented in the following example:

```
tar xvf /dev/rfloppy/c201d3s0
```

Examine the contents of the `/dev/rfloppy` and `/dev/rdisk` directories for the names of devices defined in your system. If you are not sure about which device to use, refer to your HP documentation, or ask your system administrator for assistance.

Install the Hardware

Follow these steps to install the EISA-GPIB board:

1. Copy the EISA-GPIB board configuration file to the `/etc/eisa` directory from the working directory (`/usr/gpib`). The name of the configuration file is `!NICC50x.CFG`, where `x` is a revision number. For example, if the working directory contains the file `!NICC502.CFG`, enter the following command:

```
cp \!NICC502.CFG /etc/eisa
```

The configuration file should remain in the `/etc/eisa` directory as long as the GPIB board is installed in the system.

Note: *The working directory contains additional configuration files for use with other GPIB interface boards. These files are not used for the EISA-GPIB installation.*

2. Enter the following command to halt the system, then power off the system.

```
/etc/shutdown -h
```

3. Insert the EISA-GPIB board into an unused EISA slot. Make sure that you insert the board all the way into the slot. Sometimes the board seems to click firmly into place, even though it is only part of the way in.

Note: *Some HP 9000 series 700 machines support one or more EISA slots as standard equipment, but other HP 9000 series 700 machines support EISA only as an installable option. For detailed installation instructions and warnings about your particular EISA configuration, refer to the manuals that came with your system.*

4. Power on the system. As the system boots, the EISA-GPIB board is automatically configured from the information contained in the `/etc/eisa/!NICC50x.CFG` file.

After you install the NI-488.2M software, the software automatically configures itself to use the interrupt and DMA settings configured on the hardware. If you are installing one EISA-GPIB, the software assigns it as `gpib0`. If you are installing more than one board, the board in the lowest-numbered slot is `gpib0`, the board in the next lowest-numbered slot is `gpib1`, and so on. You can override these assignments using the NI-488.2 configuration program `ibconf`. `ibconf` is described in Chapter 3, *Software Installation and Configuration*.

Configure the Hardware (Optional)

Follow the instructions in this section to change or view the hardware configuration settings of the EISA-GPIB that were assigned automatically by the system.

Selecting the Interrupt Request Line

The EISA-GPIB can use any of the following interrupt request lines (IRQs): IRQ3, IRQ4, IRQ5, IRQ6, IRQ7, IRQ9, IRQ10, IRQ11, IRQ12, IRQ14, and IRQ15.

If, for some reason, you must change the board IRQ to something other than that assigned by the system, run the system configuration program, `eisa_config`, and reconfigure the board IRQ in the system configuration.

1. Enter the following command at the `EISA:` prompt to obtain a list of the IRQ choices of the GPIB board:

```
show board slotnum
```

where `slotnum` should be replaced by the actual slot number that your board occupies.

2. Enter the following command at the `EISA:` prompt:

```
change slotnum F2 choicenum
```

where `slotnum` should be replaced by the actual slot number that your board occupies, `F2` is the function number of the function EISA-GPIB Interrupt Request Level, and `choicenum` should be replaced with the actual choice number of the preferred IRQ (for example, `CH1` is the choice number for IRQ11).

3. Exit the program by entering `q`. Then enter `s` to save the change to the configuration file of the system.

For details on how to use the `change` and `show board` commands in `eisa_config`, refer to Chapter 3, *Configuring EISA Boards Interactively*, in the *EISA Configuration Guide for HP-UX, HP 9000 Series 700 Computers*.

Record the new setting of the IRQ on the *Hardware and Software Configuration Form* in Appendix B, *Customer Communication*.

Selecting the DMA Channel

Direct memory access (DMA) refers to data transfers between devices, such as the GPIB board and computer memory, without the active participation of the CPU. Your GPIB hardware and the NI-488.2M software are designed to perform DMA. In most cases, data transfers that use DMA are significantly faster than programmed I/O transfers, which use more CPU time.

The EISA-GPIB board supports DMA channels 0, 1, 2, 3, 4, 5, 6, and 7. DMA can also be disabled for programmed I/O operation.

If, for some reason, you must change the DMA channel of the board to something other than that assigned automatically by the system, run the system configuration program, `eisa_config`, and reconfigure the DMA channel of the board in the system configuration.

1. Enter the following command at the EISA: prompt to obtain a list of the DMA channel choices of the GPIB board:

```
show board slotnum
```

where `slotnum` should be replaced by the actual slot number that your board occupies.

2. Enter the following command at the EISA: prompt:

```
change slotnum F1 choicenum
```

where `slotnum` should be replaced by the actual slot number that your board occupies, `F1` is the function number of the function EISA-GPIB DMA Channel, and `choicenum` should be replaced with the actual choice number of the preferred DMA channel (for example, `CH1` is the choice number for DMA channel 5).

3. Exit the program by entering `q`. Then enter `s` to save the change to the configuration file of the system.

For details on how to use the `change` and `show board` commands in `eisa_config`, refer to Chapter 3, *Configuring EISA Boards Interactively*, in the *EISA Configuration Guide for HP-UX, HP 9000 Series 700 Computers*.

Record the new setting of the DMA channel on the *Hardware and Software Configuration Form* in Appendix B, *Customer Communication*.

Remove the Board (Optional)

Follow these steps to remove a currently installed GPIB board:

1. Change to the `/etc/eisa` directory by entering the following command:

```
cd /etc/eisa
```

2. Run the system EISA configuration program by entering the following command:

```
/etc/eisa_config
```

3. Type the following command at the EISA: prompt in order to remove the GPIB board installed at slot *n*:

```
remove n
```

4. Exit the program by entering *q*, then enter *s* to save the change to the system configuration file.

5. Shut down the system with the following command, then power off the system:

```
/etc/shutdown -h
```

6. Remove the board.

Note: *For detailed installation instructions and warnings about your particular EISA configuration, refer to the manuals that came with your system.*

7. Power on the system.

Chapter 3

Software Installation and Configuration

This chapter contains instructions to help you install and configure your NI-488.2M software in the HP-UX kernel.

Software Components

The NI-488.2M working directory should contain the following files:

- !NICC00x.CFG is the AT-GPIB board configuration file.
- !NICC30x.CFG is the AT-GPIB/TNT board configuration file.
- !NICC50x.CFG is the EISA-GPIB board configuration file.
- cib.c is the C language interface library.
- cib.h is the private include file for cib.c.
- ib_hpx.o is the NI-488.2M driver for the GPIB board.
- ibconf is the software configuration utility.
- ibic is the interface bus interactive control utility.
- ibtsta is the software installation test, part A.
- ibtstb is the software installation test, part B.
- instgpiib is the install script for the driver.
- ugpib.h is the include file for user programs.

Note: *The NI-488.2M driver supports versions of the National Instruments AT-GPIB interface board as well as the EISA-GPIB. The AT-GPIB configuration files included in the software distribution are not used for the EISA-GPIB installation.*

Install the NI-488.2M Software

Before you install the software, consider the following:

- You must have super-user privilege.
- The contents of the NI-488.2M distribution disk should already have been loaded into a working directory on your hard drive (for example, `/usr/gpib`) during hardware installation. See Chapter 2, *Hardware Configuration and Installation*.

You can install the NI-488.2M software either automatically or manually, as described in the following sections.

Automatic Installation

To automatically install the NI-488.2M software, go to your working directory (`/usr/gpib`) and enter the following command:

```
./instgpib
```

The program prompts you for the information it needs to install the driver and utilities.

If the automatic installation fails, `instgpib` displays the error encountered during the installation.

Manual Installation

To manually install the NI-488.2M software, go to your working directory (`/usr/gpib`) and complete the following steps:

1. Copy the file `ugpib.h` to `/usr/include/sys` by entering the following command:

```
cp ugpib.h /usr/include/sys
```

2. Copy the files `ibic`, `ibconf`, `ibtsta`, and `ibtstb` to a directory in the command search path (for example, `/usr/bin`) by entering the following commands:

```
cp ibic /usr/bin
cp ibconf /usr/bin
cp ibtsta /usr/bin
cp ibtstb /usr/bin
```

3. Install the C library by compiling the file `cib.c` and converting its object file `cib.o` into a library. This procedure is necessary if you are compiling your application with the `-lgpib` option, as described in Chapter 5, *Using Your NI-488.2M Software*. To compile the file `cib.c` and create a C language library, enter the following commands:

```
cc -c cib.c
ar rv /usr/lib/libgpib.a cib.o
```

Alternatively, you can add `cib.o` to an existing library or include `cib.o` during the link phase of each compile operation. Refer to Chapter 5 for more information.

4. Change to the `/etc/conf` directory by entering the following command:

```
cd /etc/conf
```

5. Make a backup copy of your current system configuration description file (for example, `/etc/conf/dfile`) by entering the following command:

```
cp dfile dfile.old
```

6. Add the NI-488.2M driver to the `dfile` file by editing `/etc/conf/dfile`. Find the line containing `* Drivers` and `Subsystems`. Below this line, add the name of the NI-488.2M driver `ib`.

7. Make a backup copy of the `/etc/master` file, which lists all possible device drivers, by entering the following command:

```
cp /etc/master /etc/master.old
```

8. Include the NI-488.2M driver in the master file by editing `/etc/master`. Find the line shown below:

```
**Reserved for Third Party and User Drivers.
```

Below this line, you should find one or more lines in the following six-field format:

```
**      --- -      -      -1      N
```

In the above line, *N* is a number not equal to `-1`. Choose one of those lines and replace its first four fields with the following:

```
ib      ib      1      1F8
```

so that the line reads as

```
ib      ib      1      1F8 -1      N
```

The value for *N* is the major number of the GPIB board. You should make a note of the value of *N* for later use.

9. Generate the files used to create a new kernel containing the NI-488.2M driver by entering the following command:

```
/etc/config dfile
```

The files generated are `config.mk`, a make file that you use to generate a new HP-UX kernel, and `conf.c`, a C file that links in the NI-488.2M driver.

10. Add the NI-488.2M driver to the HP-UX kernel by copying it into a standard library:

```
ar rv libusrdrv.a /usr/gpib/ib_hpux.o
```

11. Build a new kernel by entering the following command:

```
make -f config.mk
```

This builds a new HP-UX kernel, named `hp-ux`, in your current directory, which should be `/etc/conf`. This new kernel contains the NI-488.2M driver.

12. Install the new kernel by entering the following commands in order:

```
cp /hp-ux /SYSBCKUP
cp ./hp-ux /hp-ux
```

The backup of the previous kernel is saved as `SYSBCKUP` under the root directory (`/`).

13. Create the device node for the NI-488.2M driver by entering the following commands in order:

```
cd /dev
mknod gpib c N 50
```

where N , which you recorded in Step 8, is the major number of the GPIB board.

14. Reboot the system by entering the following command:

```
sync;sync;/etc/reboot
```

Configure the Software with `ibconf`

If you installed the software manually, you must run the software configuration utility `ibconf` (you must have super-user privilege). `ibconf` creates the remaining device nodes that the driver needs. If you used the automatic installation procedure, running `ibconf` is optional.

`ibconf` is a screen-oriented utility that you can use to inspect and modify the default software parameters. `ibconf` is largely self-explanatory, with help screens to explain commands and options.

Note: *You cannot use `ibconf` to configure the DMA channel or the interrupt jumper setting on the EISA-GPIB board. You can, however, change the slot number assigned to each logical GPIB board. To configure the DMA and interrupt, use the EISA configuration utility that came with your computer. For more information, refer to the *Configure Your Hardware* section in Chapter 2.*

Follow these steps to run `ibconf`:

1. Enter the following command at the command prompt:

```
ibconf [ file ]
```

where *file* can be any HP-UX kernel file with the NI-488.2M driver installed. The default HP-UX kernel file is `/hp-ux`.

If you have given your HP-UX kernel file a name other than `/hp-ux`, use the `file` option to give the whole path name of the HP-UX kernel. For example, if the kernel name is `/hp-ux.new`, enter the following command:

```
ibconf /hp-ux.new
```

2. Use the control keys, as instructed on the screen, to select different fields and view corresponding help information.
3. Make any necessary changes.
4. Exit `ibconf` by pressing `<CTRL-O>`, and save your changes by typing a `y`. Even if you did not make any changes to the configuration settings, you should still type a `y` to have `ibconf` create the special device files `gpiB*` and `dev*` in the `/dev` directory.

If you did not make any changes to the configuration settings or if you only renamed devices, you do *not* have to restart the system. However, if you made any changes to the configuration settings, you must restart the system to run on the new kernel. Restart the system by entering the following command:

```
sync;sync;/etc/reboot
```

For more information on using `ibconf`, refer to Chapter 2, *Installation and Configuration of NI-488.2M Software*, in the *NI-488.2M Software Reference Manual*.

Remove the NI-488.2M Driver (Optional)

You may want to remove the NI-488.2M driver at some time. You must remove the driver manually.

To manually remove the NI-488.2M driver, follow a procedure that is similar to the procedure you would use to manually install the driver (see the *Manual Installation* section, which is located earlier in this chapter). The only difference is that instead of adding the NI-488.2M driver information to the current system configuration description file (`/etc/conf/dfile`) and `/etc/master`, you must remove the driver information from those files.

Complete the following steps to remove the NI-488.2M driver from the kernel:

1. Change to the `/etc/conf` directory by entering the following command:

```
cd /etc/conf
```

2. Edit your current system configuration description file (for example, `/etc/conf/dfile`) to remove the name of the NI-488.2M driver `ib`.

3. Edit file `/etc/master` and remove the following line:

```
ib      ib      1      1F8      -1      N
```

where *N* is the major number you chose for the GPIB board.

4. Generate the new files used to create a new kernel not containing the NI-488.2M driver by entering the following command:

```
/etc/config dfile
```

5. Build the new kernel by entering the following command:

```
make -f config.mk
```

This builds a new HP-UX kernel, named `hp-ux`, in your current working directory, which should be `/etc/conf`. The new kernel does not contain the NI-488.2M driver.

6. Install the new kernel by entering the following commands in order:

```
cp /hp-ux /SYSBCKUP
cp ./hp-ux /hp-ux
```

The backup of the previous kernel is saved as `SYSBCKUP` under the root directory (`/`).

7. Reboot the system to use the new kernel by entering the following command:

```
sync;sync;/etc/reboot
```


Chapter 4

Installation Verification and Troubleshooting

This chapter describes how to verify the software installation and how to troubleshoot problems.

Run the Software Installation Test

The software installation test has two parts: `ibtsta` and `ibtstb`.

- `ibtsta` checks for a correct node `/dev/gpib0` and correct access to the device driver.
- `ibtstb` checks for correct DMA and interrupt operation. `ibtstb` requires a GPIB analyzer and can be omitted if an analyzer is not available.

Complete the following steps to verify the software installation:

1. Run `ibtsta` by entering the following command:

```
ibtsta
```

2. If `ibtsta` completes with no errors and a bus analyzer is available, connect the bus analyzer to the GPIB board, then run `ibtstb` by entering the following command:

```
ibtstb
```

If no error occurs, the NI-488.2M driver is installed correctly. If an error occurs, refer to the next section for troubleshooting information.

Troubleshooting Error Messages

If `ibtsta` fails, the program generates common error messages that appear on your screen. These error messages explain what went wrong when you ran `ibtsta` and describe how you can correct the errors. For example, the following message might appear on your screen if you forgot to disconnect all your GPIB cables:

```
The fact that the ENOL error was not received when expected
indicates the possible presence of other devices on the bus.
```

```
Please disconnect ALL GPIB cables from the GPIB board,
then run this test again.
```

If you are still unable to run `ibtsta` and/or `ibtstb` successfully after you have followed the suggestions provided by the error messages, fill out the forms in Appendix B, *Customer Communication*, and contact National Instruments for assistance.

Common Questions

What do I do if `ibtsta` or `ibtstb` fails with an error?

Refer to the troubleshooting sections of this chapter for specific information about what might cause these tests to fail.

When would I use `ibic`?

You can use `ibic` to test and verify instrument communication, troubleshoot problems, and develop your application program. For more information about `ibic`, refer to the *NI-488.2M Software Reference Manual*.

How do I use the NI-488.2M language interface?

For information about using the NI-488.2M C language interface, refer to the *NI-488.2M Software Reference Manual*.

What information should I have before I call National Instruments?

When you call National Instruments, you should have the results of the diagnostic tests. Also, make sure you have filled out the configuration form in Appendix B, *Customer Communication*.

Chapter 5

Using Your NI-488.2M Software

This chapter describes the `ibic` utility and lists some programming considerations.

Introduction to `ibic`

The Interface Bus Interactive Control utility, `ibic`, comes with your NI-488.2M software. You can use `ibic` to enter NI-488.2 functions interactively and to display the results of the function calls automatically. Without writing an application, you can use `ibic` to do the following:

- Verify GPIB communication with your device quickly and easily.
- Learn the usage of the NI-488 functions and NI-488.2 routines before you write your application.
- Become familiar with the commands of your device.
- Receive data from your GPIB device.
- Troubleshoot problems with your application.

For more information about `ibic`, refer to Chapter 6, *ibic*, in the *NI-488.2M Software Reference Manual*.

Programming Considerations

Once you have installed the NI-488.2M driver and successfully verified its installation, you are ready to proceed with the development of your NI-488.2M application.

As you begin developing your NI-488.2M application, consider the following:

- Your application program must include the following header file:

```
<sys/ugpib.h>
```

- The file `cib.c` is the interface between your C language application program and the operating system entry points to the NI-488.2M driver. The NI-488 functions and NI-488.2 routines available in `cib.c` are described briefly in Chapter 3, *Understanding the NI-488.2M Software*, in the *NI-488.2M Software Reference Manual*. The NI-488 functions and NI-488.2 routines are described in more detail in Chapter 4, *NI-488.2M Software Characteristics and Routines*, and in Chapter 5, *NI-488M Software Characteristics and Functions*, in the *NI-488.2M Software*

Reference Manual. To use the NI-488 functions and NI-488.2 routines, you must compile `cib.c` and include the resulting object file (`cib.o`) during the link phase each time you compile your application, as shown in the following example:

```
cc my_appl.c cib.o
```

Alternatively, you can compile your application and link it to the C language library, `libgpib.a` (created when you installed the software) as shown in the following example:

```
cc my_appl.c -lgpib
```

- For information about creating the C language library `libgpib.a`, refer to the *Manual Installation* section in Chapter 3 of this manual.
- For information about choosing a programming method, developing your application, or compiling and linking, refer to the *NI-488.2M Software Reference Manual*. The software reference manual contains detailed information about each NI-488 function and NI-488.2 routine.

Appendix A

Hardware Specifications

This appendix describes the characteristics of the EISA-GPIB board and the recommended operating conditions.

Table A-1. Electrical Characteristics

Characteristic	Specification
Maximum GPIB Transfer Rates	
IEEE 488 Handshake	1.5 Mbytes/s*
HS488 Handshake	5.6 Mbytes/s*
Power Requirement	+5 VDC 300 mA
* Actual speed may vary considerably from speed shown because of instrumentation capabilities.	

Table A-2. Physical Characteristics

Characteristic	Specification
Dimensions	11.4 cm by 16.5 cm (4.5 in. by 6.5 in.)
I/O Connector	IEEE 488 Standard 24-pin

Table A-3. Environmental Characteristics

Characteristic	Specification
Operating Environment	
Component Temperature	0° to 40° C
Relative Humidity	5% to 90%, noncondensing
Storage Environment	
Temperature	-20° to 70° C
Relative Humidity	5% to 90%, noncondensing
EMI	FCC Class B Certified

Appendix B

Customer Communication

For your convenience, this appendix contains forms to help you gather the information necessary to help us solve technical problems you might have as well as a form you can use to comment on the product documentation. Filling out a copy of the *Technical Support Form* before contacting National Instruments helps us help you better and faster.

National Instruments provides comprehensive technical assistance around the world. In the U.S. and Canada, applications engineers are available Monday through Friday from 8:00 a.m. to 6:00 p.m. (central time). In other countries, contact the nearest branch office. You may fax questions to us at any time.

Corporate Headquarters

(512) 795-8248

Technical support fax: (800) 328-2203
(512) 794-5678

Branch Offices	Phone Number	Fax Number
Australia	(03) 879 9422	(03) 879 9179
Austria	(0662) 435986	(0662) 437010-19
Belgium	02/757.00.20	02/757.03.11
Denmark	45 76 26 00	45 76 71 11
Finland	(90) 527 2321	(90) 502 2930
France	(1) 48 14 24 00	(1) 48 14 24 14
Germany	089/741 31 30	089/714 60 35
Italy	02/48301892	02/48301915
Japan	(03) 3788-1921	(03) 3788-1923
Netherlands	03480-33466	03480-30673
Norway	32-848400	32-848600
Spain	(91) 640 0085	(91) 640 0533
Sweden	08-730 49 70	08-730 43 70
Switzerland	056/20 51 51	056/20 51 55
U.K.	0635 523545	0635 523154

Technical Support Form

Technical support is available at any time by fax. Include the information from your configuration form. Use additional pages if necessary.

Name _____

Company _____

Address _____

Fax (____) _____ Phone (____) _____

Computer brand _____

Model _____ Processor _____

Operating system _____

Speed _____MHz RAM _____MB

Display adapter _____

Mouse _____yes _____no

Other adapters installed _____

Hard disk capacity _____MB Brand _____

Instruments used _____

National Instruments hardware product model _____

Revision _____

Configuration _____

National Instruments software product _____

Version _____

Configuration _____

(continues)

The problem is _____

List any error messages _____

The following steps will reproduce the problem _____

Hardware and Software Configuration Form

Record the settings and revisions of your hardware and software on the line to the right of each item. Update this form each time you revise your software or hardware configuration, and use this form as a reference for your current configuration.

National Instruments Products

- EISA-GPIB Board and Revision Number _____
- NI-488.2M Software Revision Number on Distribution Disk _____

- Board Settings:

	Slot Number	Interrupt Level	DMA Channel
gpib0	_____	_____	_____
gpib1	_____	_____	_____
gpib2	_____	_____	_____
gpib3	_____	_____	_____

Other Products

- Computer Make and Model _____
- Microprocessor _____
- Clock Frequency _____
- Type of Monitor Card Installed _____
- HP-UX Platform _____
- Application Programming Language (BASIC, C, Pascal, and so on) _____

Glossary

Prefix	Meaning	Value
m-	milli-	10^{-3}
c-	centi-	10^{-2}
k-	kilo-	10^3
M-	mega-	10^6

°	degrees
%	percent
A	amperes
ASIC	application-specific integrated circuit
C	Celsius
CPU	central processing unit
DACK	DMA Acknowledge
DRQ	DMA Request
DMA	direct memory access
EISA	Extended Industry Standard Architecture
EMI	electromagnetic interference
FCC	Federal Communications Commission
GPIB	General Purpose Interface Bus
hex	hexadecimal
I/O	input/output
IEEE	Institute of Electrical and Electronic Engineers
in.	inches
IRQ	interrupt request
ISA	Industry Standard Architecture
m	meters
MB	megabytes of memory
PC	personal computer
s	seconds
VDC	volts direct current